

Residents Associations' proofs: images

NorthWestTwo Residents Association

Cricklewood Railway Terraces Residents Association

Mapesbury Residents Association

The Groves Residents Association

Golders Green Estate Residents Association

Planning Inspectorate Inquiry ref APP/N5090/V/22/3307073

London Borough of Barnet Application ref 20/3564/OUT

Broadway Retail Park, Cricklewood Lane, London NW2 1ES, commonly known as "the B&Q site"

The ten photographs, captioned according to viewpoints, show views towards the site from the Cricklewood Railway Terraces Conservation Area taken by residents from bedrooms and gardens, from a cross road looking along the gardens between Johnston and Midland Terraces, and from the terraces' allotments.

Next, the satellite view showing the proximity of the site to the conservation area is from Google Earth.

The four sketches were presented to the Cricklewood Railway Terraces RA on 6 August 2019 at a meeting with councillors and senior council officers.

Figure 1: Back bedroom, 1 Champion Terrace

Figure 2: Front bedroom, 3 Midland Terrace

Figure 3: Front bedroom, 8 Midland Terrace

Figure 4: Front bedroom, Needham Terrace

Figure 5: Back bedroom, 25 Gratton Terrace

Figure 6: Allotment Way

Figure 7: Front ground floor, 22 Midland Terrace

Figure 8: Outside 25 Midland Terrace

Figure 9: Garden, Needham Terrace

Figure 10: Allotments, towards Champion Terrace and Needham Terrace

Figure 11: Google Earth, proximity of site to conservation area

Figure 12: Option 1 from CRTRA Meeting with LPA 6 August 2019

Figure 13: Option 2 from CRTRA meeting with LPA 6 August 2019

Figure 14: Option 3 from CRTRA meeting with LPA 6 August 2019

Figure 15: Option titled Preferred from CRTRA meeting with LPA 6 August 2019



Figure 1: Back bedroom, 1 Campion Terrace



Figure 2: Front bedroom, 3 Midland Terrace



Figure 3: Front bedroom, 8 Midland Terrace



Figure 4: Front bedroom, Needham Terrace



Figure 5: Back bedroom, 25 Gratton Terrace



Figure 6: Allotment Way



Figure 7: Front ground floor, 22 Midland Terrace



Figure 8: Outside 25 Midland Terrace



Figure 9: Garden, Needham Terrace



Figure 10: Allotments, towards Campion Terrace and Needham Terrace

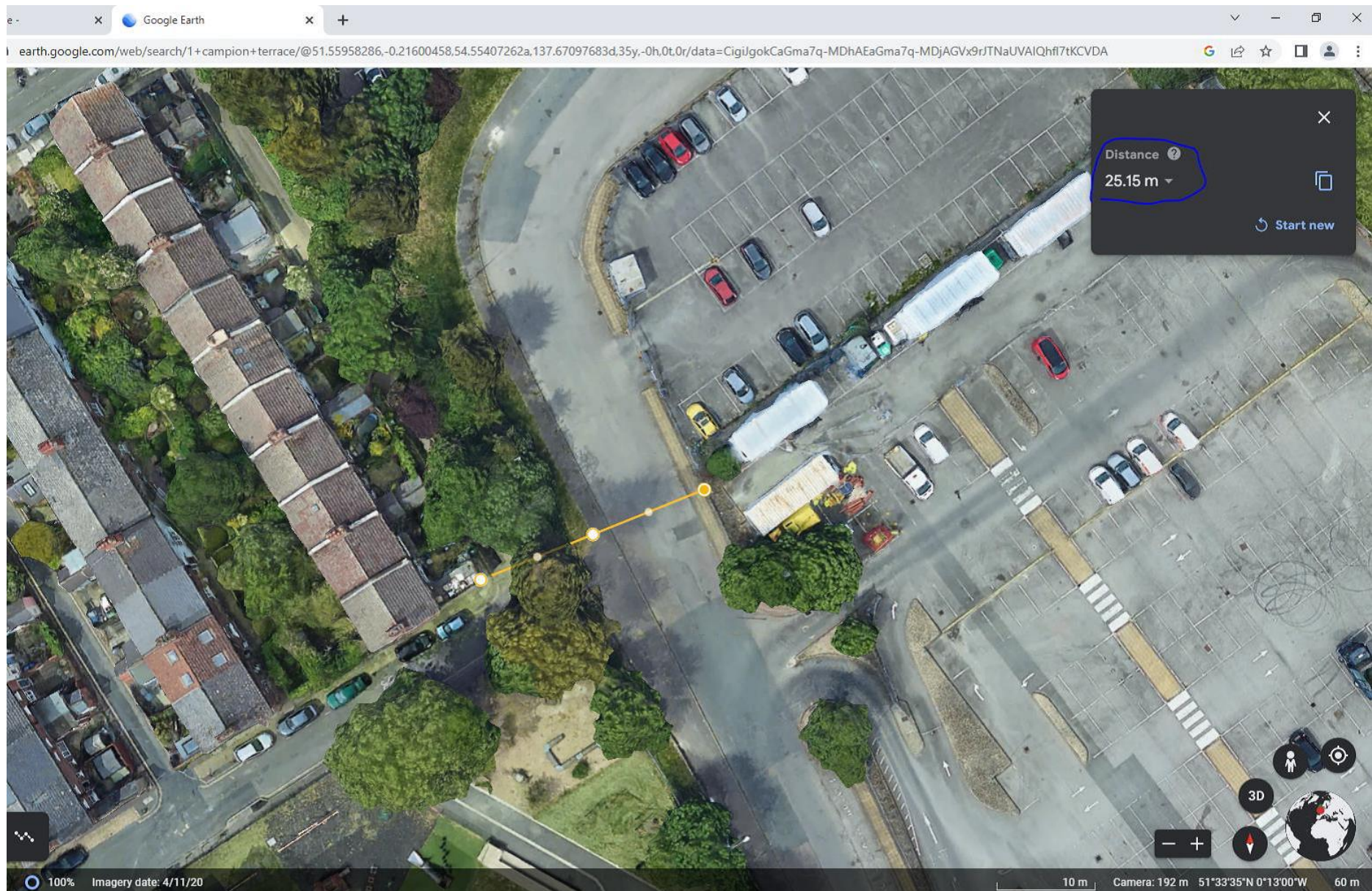


Figure 11: Google Earth, proximity of site to conservation area



Figure 12: Option 1 from CRTRA Meeting with LPA 6 August 2019

Option 2



Figure 13: Option 2 from CRTRA meeting with LPA 6 August 2019



Figure 14: Option 3 from CRTRA meeting with LPA 6 August 2019

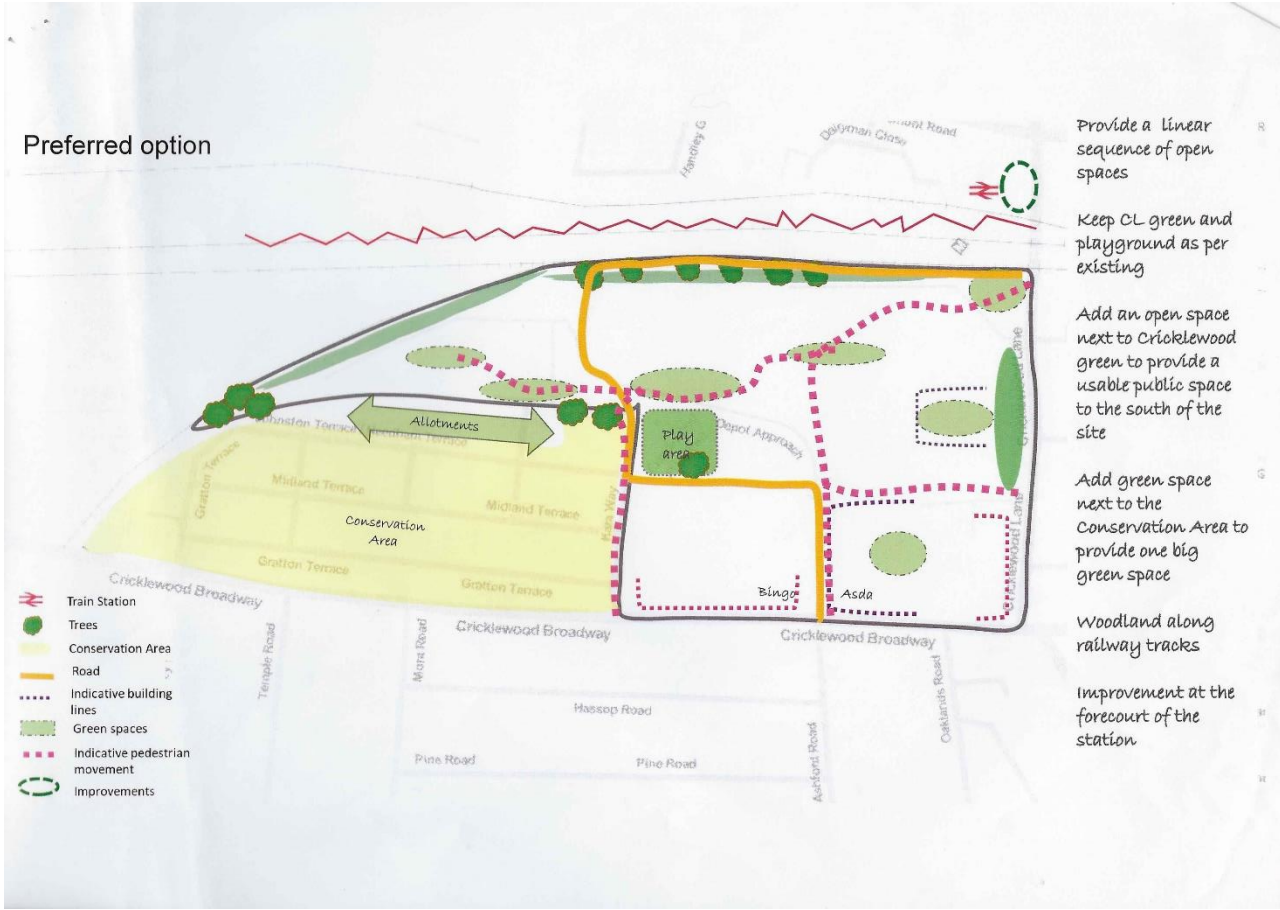


Figure 15: Option titled Preferred from CRTRA meeting with LPA 6 August 2019