



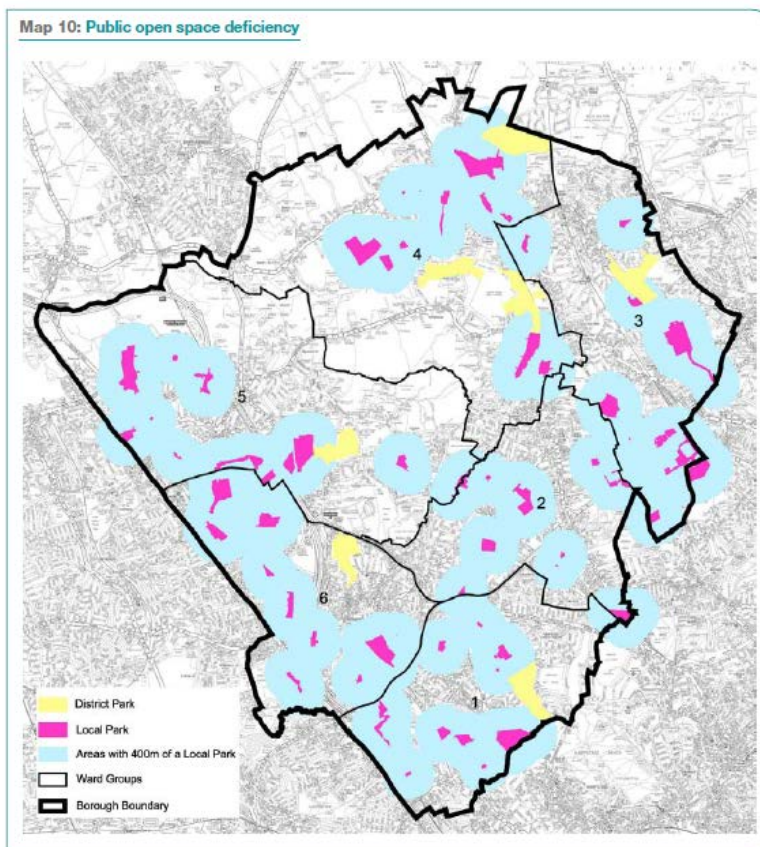
## Note

### B&Q Cricklewood Cllr Young's Proof of Evidence Paragraph 8.6 – Local Plan Policy DM15

22ND FEBRUARY 2023

- 1.1 Cllr Young's Proof of Evidence Paragraph 8.6 refers to Local Plan DM15 public open space requirements (CDF.04) in respect of the site being in an area deficient in open space.
- 1.2 Map 10 of the Core Strategy 2012 (CDF.03) defines open space deficiency and areas within 400m of a local park and is enclosed below at Figure 1.

**Figure 1: Map 10 of the Core Strategy (CDF.03)**



- 1.3 The closest open space shown on the plan is Millennium Park, Claremont Road.
- 1.4 Millennium Park, Claremont Road's relationship to the application site is shown below at Figure 2 below. The resolution of Map 10 when the zoom in function is used is poor.



## Note continued

**Figure 2: Map 10 of the Core Strategy (CDF.03)**



- 1.5 We understand that Map 10 is derived from the evidence base to the local plan, document London Borough of Barnet Open Space, Sports and Recreational Facilities Assessment Final Report (2009)<sup>1</sup>. This document is available on the Council's website <https://www.barnet.gov.uk/planning-conservation-and-building-control-old/planning-policies/local-plan-old/ldf-evidence-and-3>.
- 1.6 Appendix D, D1 Quantity Assessment Results Table D1.1 defines Claremont Road Millennium Park as a local park of 0.44ha.
- 1.7 The Assessment contains Figure 4 at a far higher resolution than Map 10 of the Core Strategy to illustrate a distance of 400m from Claremont Road Millennium Park.

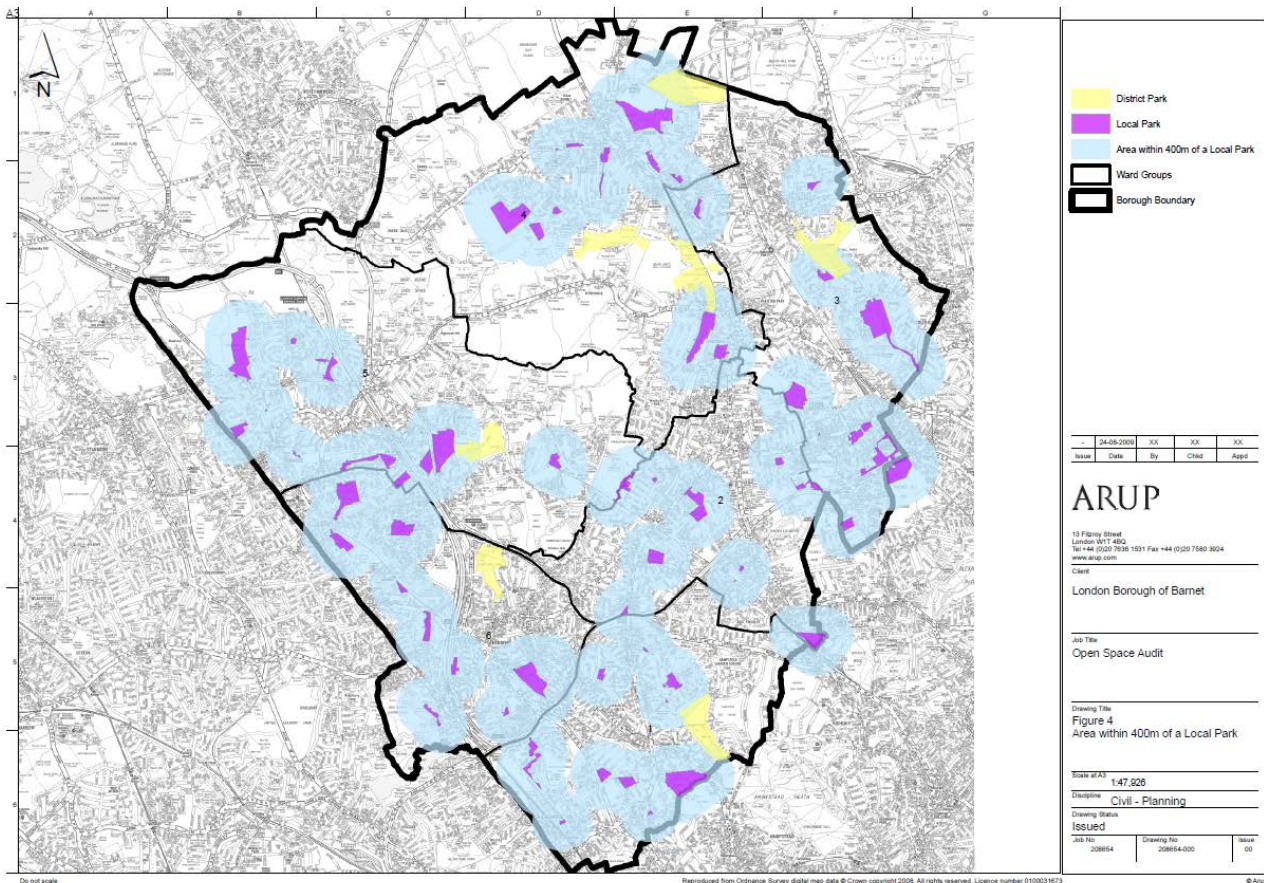
**Figure 3 - London Borough of Barnet Open Space, Sports and Recreational Facilities Assessment Final Report Figure 4**

---

<sup>1</sup> This document will become an Inquiry Document.



## Note continued



1.8 We enclose Figure 4 below, taken from the Assessment, with a zoom in function.

**Figure 4 - London Borough of Barnet Open Space, Sports and Recreational Facilities Assessment Final Report Figure 4 - Zoom**



1.9 To assist the Inspector we enclose Figure 4 with a zoom in function, and the application site boundary 20/3564/OUT.



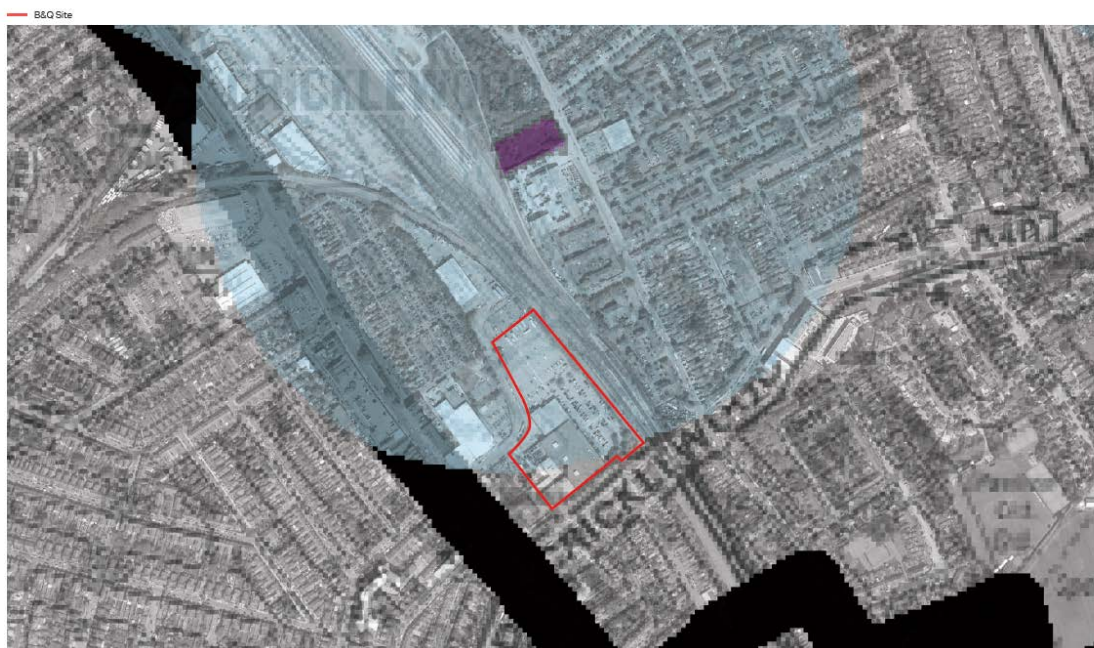
## Note continued

### Figure 5 - London Borough of Barnet Open Space, Sports and Recreational Facilities Assessment Final Report Figure 4 – with planning application boundary 20/3564/OUT

1.10 To assist the Inspector, we enclose Figure 4, taken from the Assessment, with the application boundary identified, and the 400m distance from Claremont Road Millennium Park Local Park.

#### B&Q SITE OVERLAY

Map 4 Barnet Open Space, Sports and Recreational Facilities Assessment



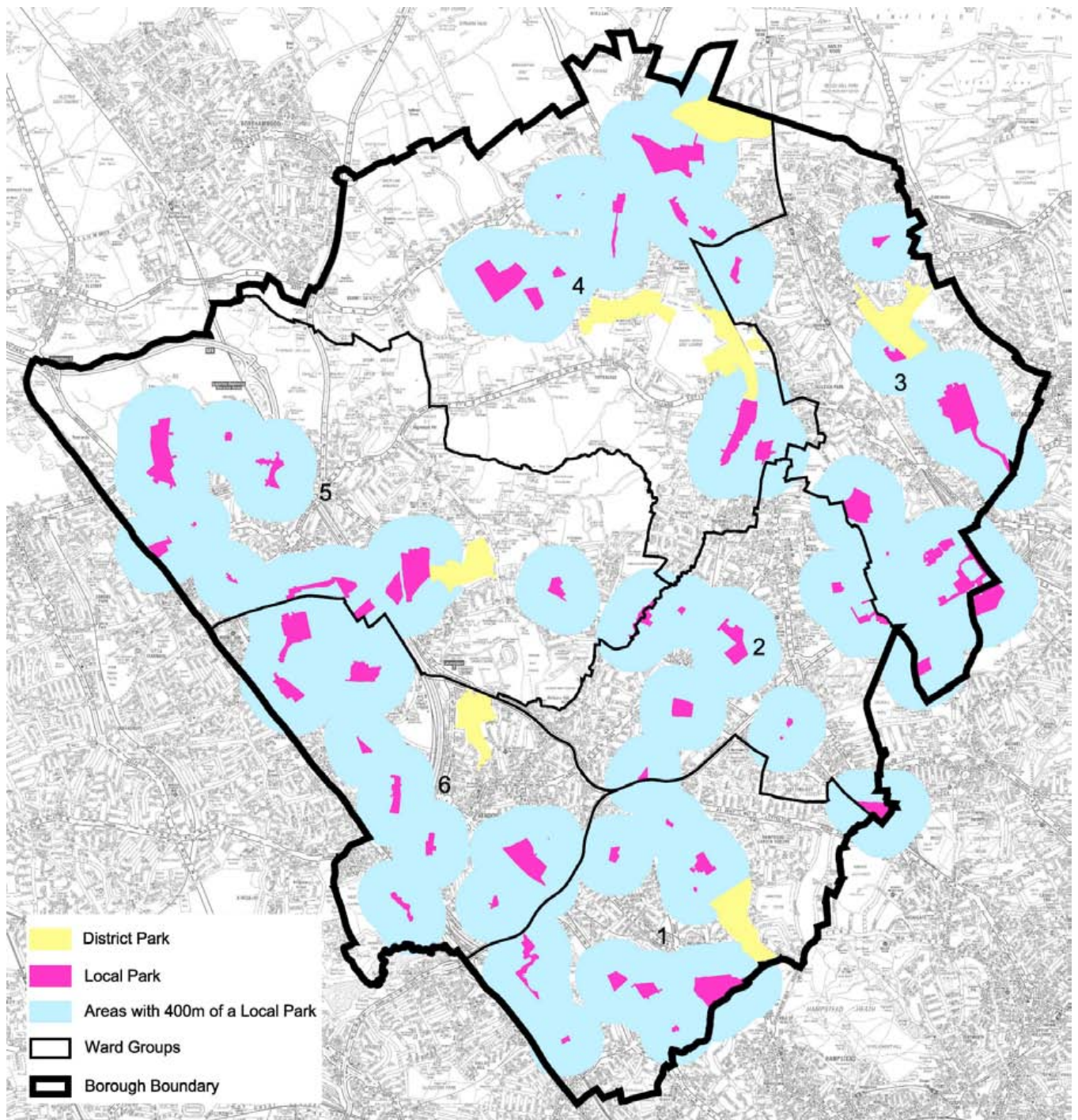
Indicated site location is approximate to match the aerial photograph and map overlay as best at the time

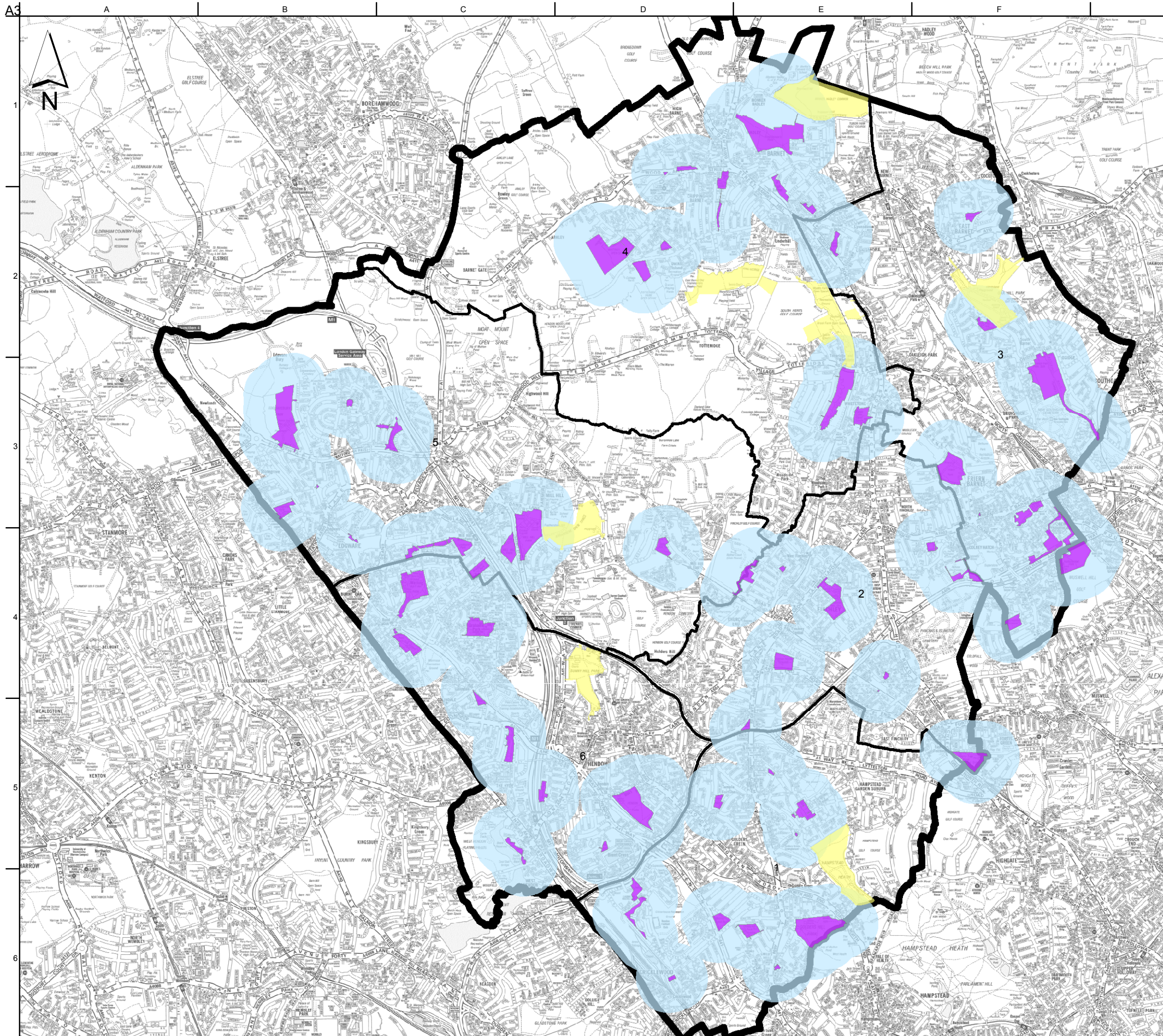


**12.2.5** On the basis of the Assessment Policy DM15 – Green Belt and Open Spaces sets out local space standards for public parks, children’s play facilities, outdoor sports provision, and natural and semi-natural green space (including Metropolitan Open Land). In applying these standards it is recognised that open spaces are multi-functional and any one space may fulfil a range of purposes.

**12.2.6** The Assessment highlights opportunities for improving the quantity and quality of open spaces in Barnet, including better linkages in order to provide a more integrated and coherent network of open space. Further guidance in ensuring improvements to the network of open spaces is provided within the SPD on Green Infrastructure.

**Map 10: Public open space deficiency**





- District Park
- Local Park
- Area within 400m of a Local Park
- Ward Groups
- Borough Boundary

-	24-08-2009	XX	XX	XX
Issue	Date	By	Chkd	Appd

**ARUP**  
 13 Fitzroy Street  
 London W1T 4BQ  
 Tel +44 (0)20 7636 1531 Fax +44 (0)20 7580 3924  
 www.arup.com

Client  
 London Borough of Barnet

Job Title  
 Open Space Audit

Drawing Title  
**Figure 4**  
 Area within 400m of a Local Park

Scale at A3  
 1:47,926

Discipline  
 Civil - Planning

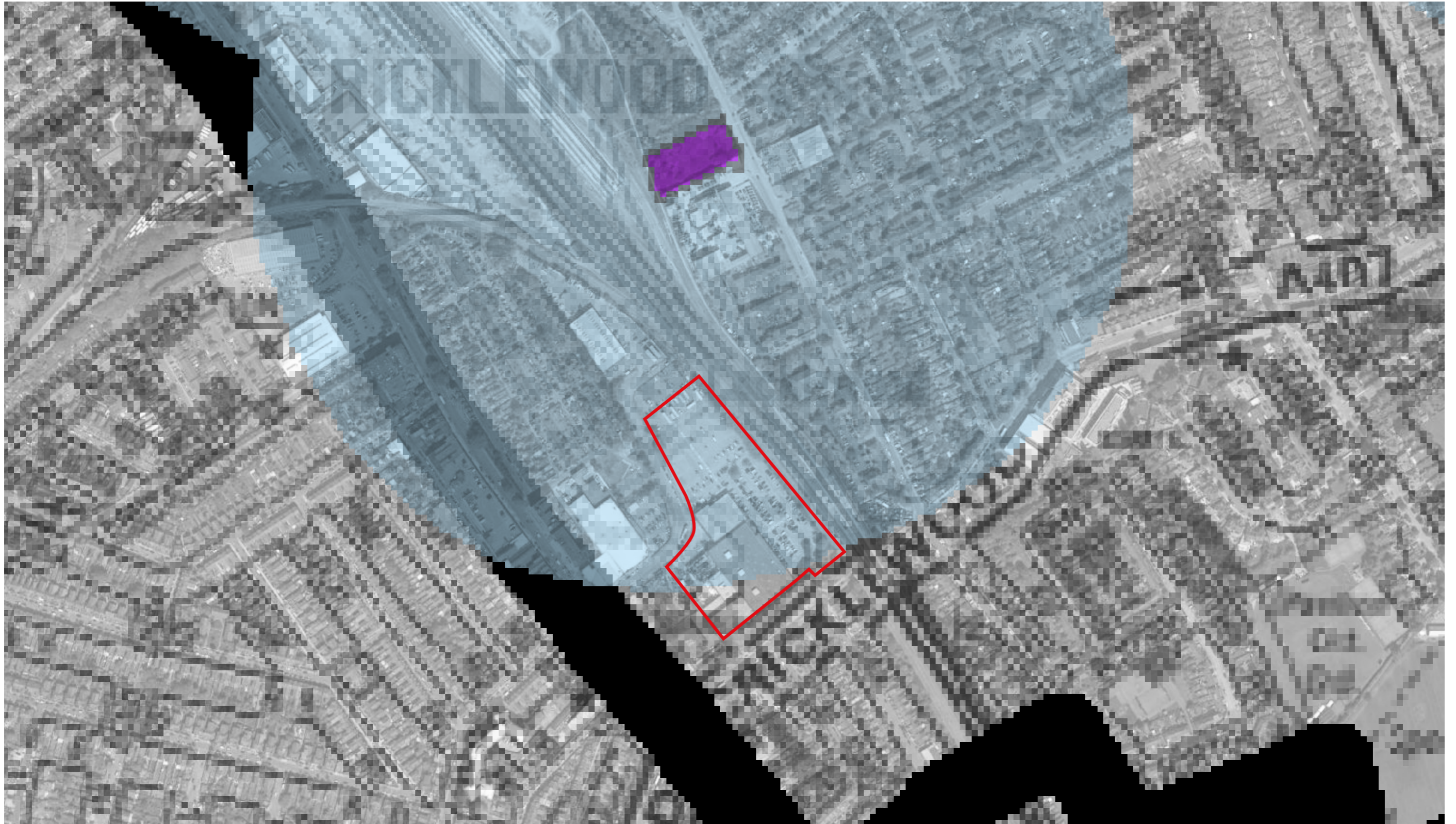
Drawing Status  
**Issued**

Job No 208654	Drawing No 208654-000	Issue 00
------------------	--------------------------	-------------

## B&Q SITE OVERLAY

### Map 4 Barnet Open Space, Sports and Recreational Facilities Assessment

— B&Q Site



Indicated site location is approximate to match the aerial photograph and map overlay as best at the time

